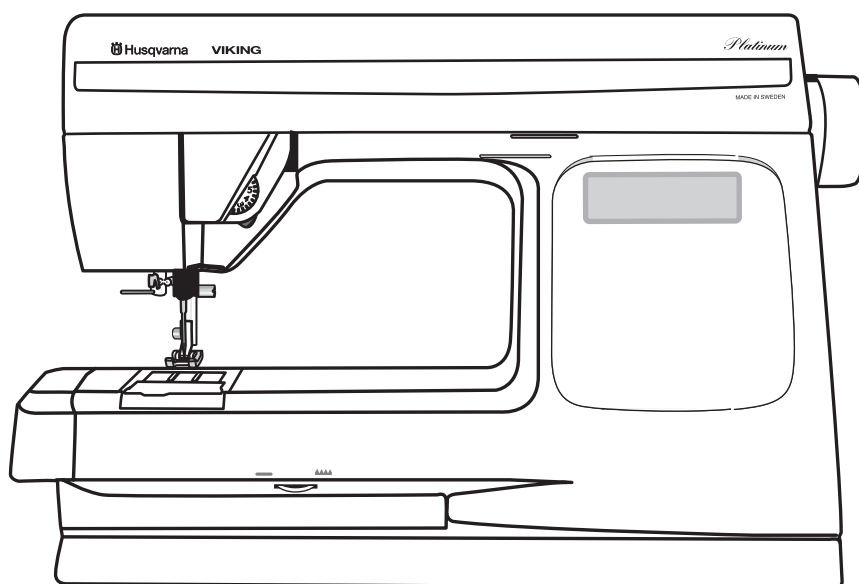


# Parts list



## PLATINUM

755

735

715

Part no	Description	Page	Part no	Description	Page
411 78 10-03	Bulb 4 V	E	412 34 48-01	Screen - Stopright func	H
411 96 68-01	Screw	A,E	412 34 50-01	Eccentric	B
411 96 68-03	Screw	A,F	412 34 54-01	Cog belt	G
411 96 68-04	Screw	E	412 34 60-01	Stop ring	H
411 96 68-10	Screw	B	412 34 75-01	Feeding step motor cpl,	I
411 96 68-12	Screw	B	412 34 79-01	Calibration stop	I
411 96 68-20	Srew	F	412 34 80-02	Damper	I
411 96 68-21	Srew	E	412 34 81-01	Spring	I
411 96 68-25	Screw	F	412 34 82-01	Setting screw	I
411 96 71-07	Screw	B	412 34 84-01	Shaft	I
411 96 87-03	Screw M3*3	E,I	412 34 85-01	Joint cross	I
411 96 87-16	Screw M5*5	G	412 34 87-01	Spring	I
411 96 88-16	Screw M5*5	G	412 34 88-01	Fastener, spring	I
411 96 88-20	Screw 6*10 mm	B	412 34 96-01	Cable motor	B
411 98 14-01	Washer	C	412 34 97-01	Cable for PC-board	B
412 05 60-01	Screw M5*14	B	412 35 31-01	Thread tension set	J, L
			412 35 33-02	Driving wheel compl.	B
412 05 60-04	Screw M3*6	B,I			
412 05 60-06	Screw M4*12	B,G,H,I	412 35 42-01	Pulley	H
412 05 60-07	Screw M4*16	J	412 35 62-01	Pin	B
412 05 60-11	Screw M3*5	D	412 35 64-01	Holder	B
412 14 30-05	Fuse 6.3 A (220/240V)	B	412 36 80-01	Locking Washer	C
412 14 30-06	Fuse 2 A (220/240V)	B	412 36 82-07	Lower shaft compl.	H
412 14 32-03	Fuse 3.5 (100/120V)	B	412 36 83-05	Arm shaft compl.	G
412 14 32-05	Fuse 2 A (100/120V)	B	412 36 84-01	Cog belt	G
412 15 78-01	Cord device, stand.	K	412 36 87-01	Pin	G
412 15 79-02	Cord device, Japan	K	412 37 11-01	Thread reel disc 20 mm	A
412 15 79-03	Cord device, USA, Can.	K	412 37 11-02	Thead reel disc 40 mm	A
412 15 80-02	Cord device, England	K	412 37 14-02	Lever Feedlift	C
412 15 81-01	Cord device, Australia	K	412 37 20-02	Knob feed dog lowering	A
412 15 98-01	Spring	K	412 37 27-01	Spring	C
412 18 45-01	Foot	K	412 37 82-01	Nut	C
412 21 14-01	Screw	F	412 38 16-02	Feed Unit Cpl.	C
412 21 14-03	Screw, torx M3*8	F	412 39 09-29	Plastic bag with access. Platinum 715, 735	L
412 21 14-04	Screw	E	412 39 09-30	Plastic bag with access. 755	L
412 21 14-06	Screw	F	412 39 12-01	Spring presserfoot lifter	E
412 21 14-14	Screw, torx M4*16	B	412 39 47-01	Washer	D
412 22 98-01	Locking nut	I	412 39 54-01	Frame Feed Unit compl.	C
412 28 19-02	Screw	C,E	412 40 97-01	Screw	F
412 28 48-01	Spring	C	412 41 12-01	Ankel	F
412 28 54-02	Presser bar	F	412 42 37-01	Thread knife	A,D
412 28 75-01	Base plate	B	412 43 18-01	Feed dog	C
412 28 79-01	Screw	D	412 45 23-01	Thread knife compl.	A
412 30 06-01	Driver	G	412 45 24-01	Holder, thread knife	A
412 30 07-01	Spring	G	412 45 55-01	Spring	J
412 30 08-01	Pulley	G	412 45 91-01	Hook cover, window	D
412 30 09-02	Hand wheel	G	412 46 44-01	Adjusting screw, thread tension	D
412 30 16-01	Link	J	412 46 45-01	Screw, thread tension	D
412 30 21-01	Locking washer	J	412 47 16-01	Thread tension compl.	D
412 30 24-01	Crank arm	J			
412 30 30-01	Guide arm	E	412 47 73-01	Bobbin case holder	D
412 30 50-01	Foot	B	412 48 09-01	Protector, take up	A
412 30 55-01	Rubber ring	B	412 49 49-01	Distance sleeve	B
412 30 74-01	Damper	D	412 50 06-01	Bearing	E,F
412 31 04-02	Guide Cpl	C	412 50 08-01	Gear segment	F
412 31 06-01	Spring	C	412 50 09-01	Spring / Lower	F
412 31 44-01	Cable standard	K	412 50 10-01	Spring / Upper	F
412 31 44-02	Cable USA, Can, Japan	K	412 50 11-01	Link	F
412 31 48-01	Spring	C	412 50 15-01	Bearing	F
412 31 69-01	Spring	F	412 50 22-01	Setting plate	F
412 31 79-01	Clutch	G	412 50 23-02	Eccentric / needle adj,	F
412 31 81-01	Clamp, lower shaft	H	412 50 24-01	Cross head compl.	F
412 31 84-01	Bushing, feed dog	C	412 50 27-01	Calibration stop	E
412 31 89-01	Control Unit	K	412 50 46-01	Wedge	F
412 32 27-05	Bobbin winding	B	412 50 47-01	Clamp ring	F
412 32 33-02	Rubber washer	A	412 50 48-01	Clamp ring	E
412 32 34-03	Step motor, feeding	I	412 51 63-02	Worm gear	H
412 32 34-10	Step motor, sewing head	E	412 52 09-01	Thread holder	A
412 32 45-04	Thread tension divice Cpl.	J	412 52 10-01	Reel pin	A
412 32 47-01	Lever thread tension	J	412 52 14-01	Spring	A
412 32 49-01	Screw thread tension	J	412 52 97-04	Protector, accessorie box	L
412 32 50-01	Spring holder	J	412 53 30-01	Stitch plate	D
412 32 71-45	Transformer compl. 220-240 V	B	412 53 34-01	Reel pin holder	A
412 32 71-47	Transformer compl. 120 V	B	412 54 97-01	Tap thread guard	A
412 32 71-48	Transformer compl. 100 V	B	412 54 98-01	Washer	A
412 32 79-01	Cable	F	412 55 01-01	Bobbin case compl.	D
412 32 84-01	Clamp	G,H	412 55 43-02	Bobbin winding cover cpl,	A
412 33 62-01	Cog Gear	E,I	412 55 79-01	Bobbin winding excenter	A
412 33 93-01	Attachment, motor	B	412 55 80-01	Thread support	A
412 33 94-01	Muffler, motor	B	412 55 81-01	Washer	A
412 33 97-02	Motor 24 V	B	412 56 15-45	Plastic bobbins (10-pac)	D,L
412 34 26-03	Spring	B	412 56 31-01	Thread support	A
412 34 47-01	Holder	B	412 57 01-01	Sleeve, lamp	L

Part no	Description	Page	Part no	Description	Page
412 58 17-02	Needle bar compl.	F	<b>ACCESSORIES</b>		
412 58 18-01	Needle clamp	F	401 53 99-01	Buttonhole knife	L
412 58 19-01	Thread guide	F	401 55 55-01	Brush	L
412 60 01-01	Needle bar frame	F	411 17 32-01	Clearance plate	L
412 60 03-01	Thread take up	E	412 08 38-47	Marking pen, neutral	L
412 68 23-07	Front cover compl. 715	A	412 36 14-01	Opener Stitch plate	L
412 68 23-08	Front cover compl. 735	A	412 38 15-01	Screw driver	L
412 68 23-09	Front cover compl. 755	A	412 56 15-45	Bobbins (10)	L
412 68 25-07	Lid cover 715	A	412 57 01-01	Sleeve, lamp	L
412 68 25-08	Lid cover 735	A	412 61 07-01	Felt pad	L
412 68 25-09	Lid cover 755	A	<b>PRESSER FEET</b>		
412 68 32-01	Free arm cover	A	412 76 40-01	Presser foot A	L
412 68 33-01	Cover plate	A	412 78 54-45	Presser foot B	L
412 68 34-01	Handle	A	412 78 53-45	Buttonhole foot C	L
412 68 36-02	Base Cover	B	412 38 04-45	Presser foot D	L
412 68 37-01	Hard cover	L	412 80 15-45	Zipper foot E	L
412 68 38-01	Accessory box compl.	L	412 79 61-45	Presser foot H	L
412 68 47-01	Presser bar guide compl.	F	412 38 06-45	Presser foot J	L
412 68 48-01	Frame	E	412 37 08-45	Quilting foot P	L
412 68 50-01	Regulating dial	E	412 81 51-01	Sensor Buttonhole foot	L
412 68 51-01	Spring-Presser bar	F	<b>USER GUIDE 715, 735, 755</b>		
412 68 52-01	Presser bar lifter	E	412 99 26-01	Users Guide Swe	L
412 68 56-01	Eccentric feed	H	412 99 26-06	Users Guide Dan	L
412 69 36-01	Spring	E	412 99 26-07	Users Guide Isl	L
412 69 37-01	Screen	A	412 99 26-10	Users Guide Jap	L
412 69 51-01	Thread guide	A	412 99 26-11	Users Guide Fin	L
412 69 65-02	Connector sensor with cable	E, F	412 99 26-21	Users Guide Nor	L
412 69 87-01	Adjusting arm	B	412 99 26-26	Users Guide Eng	L
412 69 92-01	Adjustment dial	J	412 99 26-31	Users Guide Fra	L
412 70 08-01	Thread guide	A	412 99 26-36	Users Guide Holl	L
412 70 80-01	Accessory box	L	412 99 26-41	Users Guide Ita	L
412 70 81-01	Cover accessory box	L	412 99 26-46	Users Guide Spa	L
412 70 82-01	Locking snap, Acc box	L	412 99 26-51	Users Guide Germ	L
412 70 83-01	Inside tray, Acc box	L	412 99 26-56	Users Guide Rus	L
412 70 98-01	Spring, Accessorie box	L	412 99 26-58	Users Guide Est	L
412 73 23-01	Screw needle clamp	F	412 99 26-82	Users Guide Pol	L
412 73 29-02	Back Cover	A	412 99 26-90	Users Guide Cz	L
412 73 30-01	Plug / Balance setting	A	<b>OWNERS HANDBOOK</b>		
412 73 31-01	Window / Front cover	A	413 00 61-01	Owners Handbook Swe	L
412 75 31-01	Hook cover	D	413 00 61-06	Owners Handbook Dan	L
412 76 85-06	Sewing head cpl.	E	413 00 61-07	Owners Handbook Isl	L
412 77 34-01	Foot control compl.	K	413 00 61-10	Owners Handbook Jap	L
412 82 91-01	Washer	H	413 00 61-11	Owners Handbook Fin	L
412 82 91-03	Washer	C	413 00 61-21	Owners Handbook Nor	L
412 87 67-01	Plate	F	413 00 61-26	Owners Handbook Eng	L
412 87 68-01	Plastic holder	F	413 00 61-31	Owners Handbook Fra	L
412 86 68-01	Grease protector	D	413 00 61-36	Owners Handbook Holl	L
412 86 69-01	Hook shaft	D	413 00 61-41	Owners Handbook Ita	L
412 87 69-01	Hook compl.	D	413 00 61-46	Owners Handbook Spa	L
412 93 01-01	Spring	D	413 00 61-51	Owners Handbook Germ	L
412 93 48-01	Dust cover	D	413 00 61-56	Owners Handbook Rus	L
412 98 78-45	PC-board 715/735	B	413 00 61-58	Owners Handbook Est	L
412 98 78-47	PC-board 755	B	413 00 61-90	Owners Handbook Cz	L
412 99 16-01	Foil keyboard 715	A			
412 99 17-01	Foil keyboard 735	A			
412 99 18-01	Foil keyboard 755	A			
413 02 55-04	Frame - lower	F			
413 05 22-01	Clips	F			
413 23 84-02	Needle threader	F			
721 41 64-50	Pin	C			
721 41 69-70	Pin	I			
721 41 87-70	Pin	G,H			
721 42 10-10	Pin	H			
725 52 20-05	Screw M3*6	I			
725 52 28-05	Screw	F			
728 52 19-05	Stop screw	F			
728 52 22-05	Screw	F			
728 52 83-05	Screw M4*4	G,H			
728 52 85-05	Screw M4*6	F			
728 52 87-05	Screw M4*8	D			
734 11 25-41	Washer	F			
735 21 36-01	Locking washer	B			
735 31 08-20	E-ring	D			
735 58 05-10	Locking washer	E			
735 58 23-00	Locking washer	A			
735 58 35-00	Locking washer	A			
735 58 55-00	Locking washer	G			
735 61 18-40	Circlip 2.5mm	F			
735 61 24-40	Circlip 3mm	E,J			
735 61 36-40	Circlip 4mm	E			
735 61 53-40	Circlip 6mm	E			

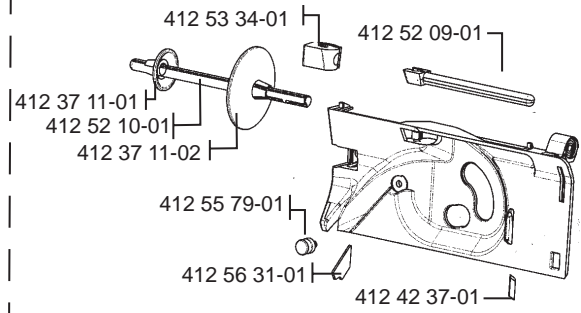
A

412 68 23-07 (715)  
412 68 23-08 (735)  
412 68 23-09 (755)



412 68 25-07 (715)  
412 68 25-08 (735)  
412 68 25-09 (755)

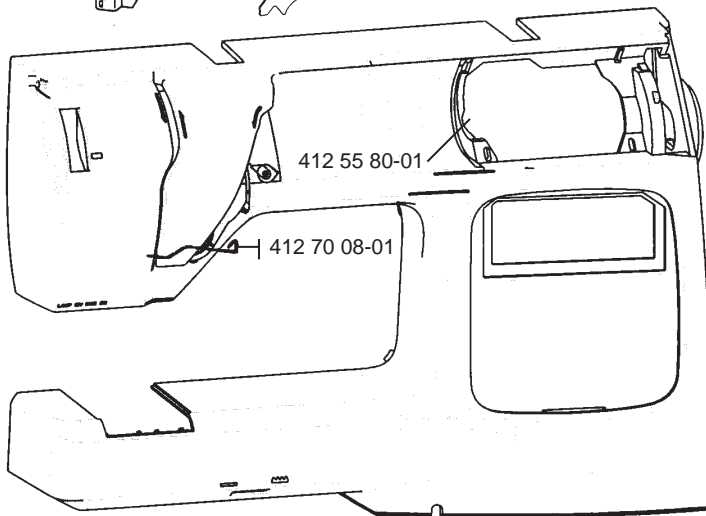
412 55 43-02



412 48 09-01

412 69 37-01

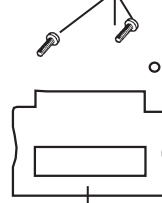
412 69 51-01



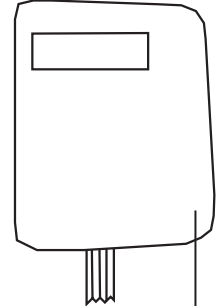
412 55 80-01

412 70 08-01

411 96 68-01

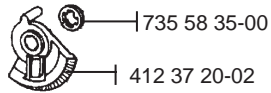


412 73 31-01



412 99 16-01 (715)  
412 99 17-01 (735)  
412 99 18-01 (755)

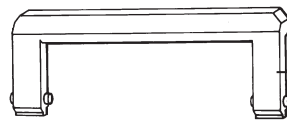
- 412 54 97-01
- 412 52 14-01
- 412 54 98-01
- 412 55 81-01
- 735 58 23-00



735 58 35-00

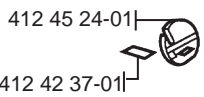
412 37 20-02

412 73 30-01



412 68 34-01

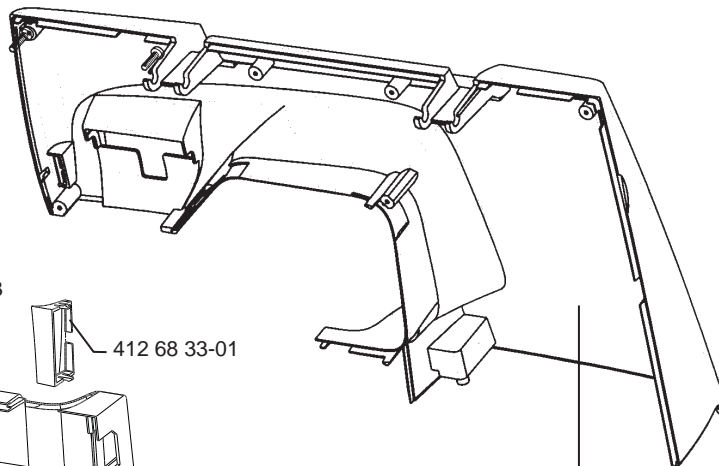
411 96 68-03



412 45 24-01

412 42 37-01

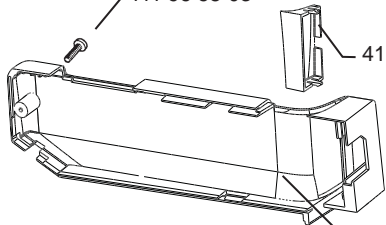
412 45 23-01



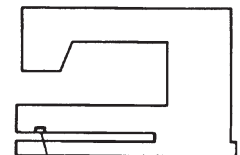
411 96 68-03

412 68 33-01

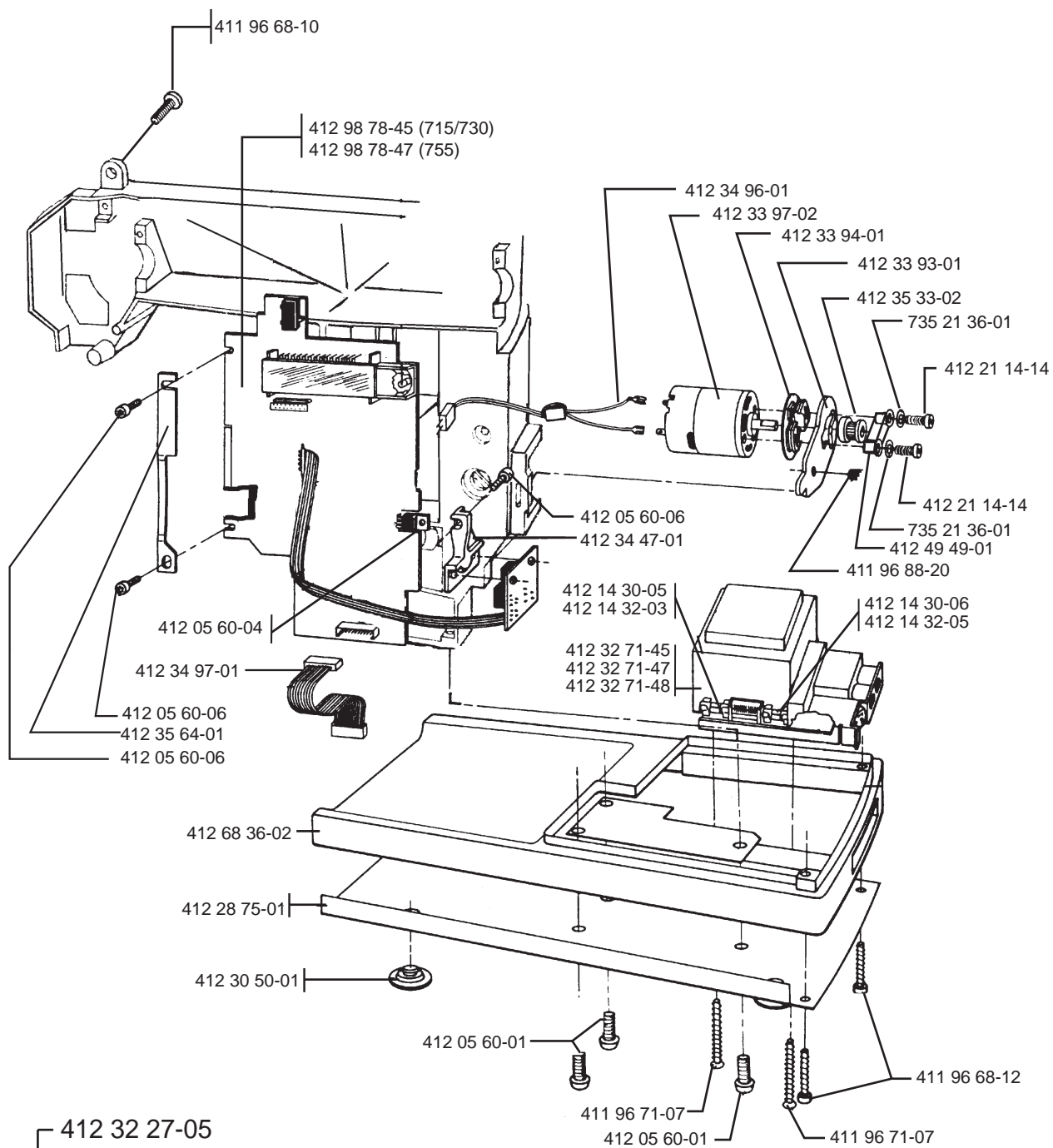
412 73 29-02



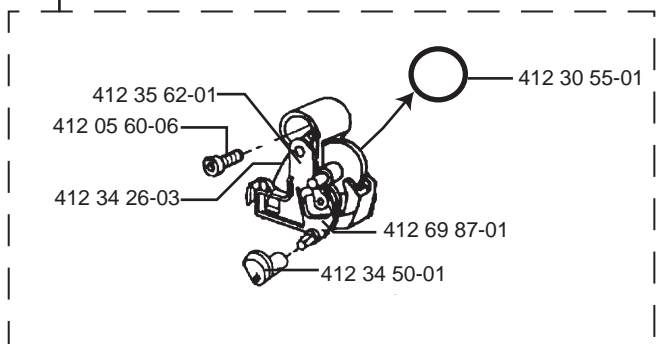
412 68 32-01



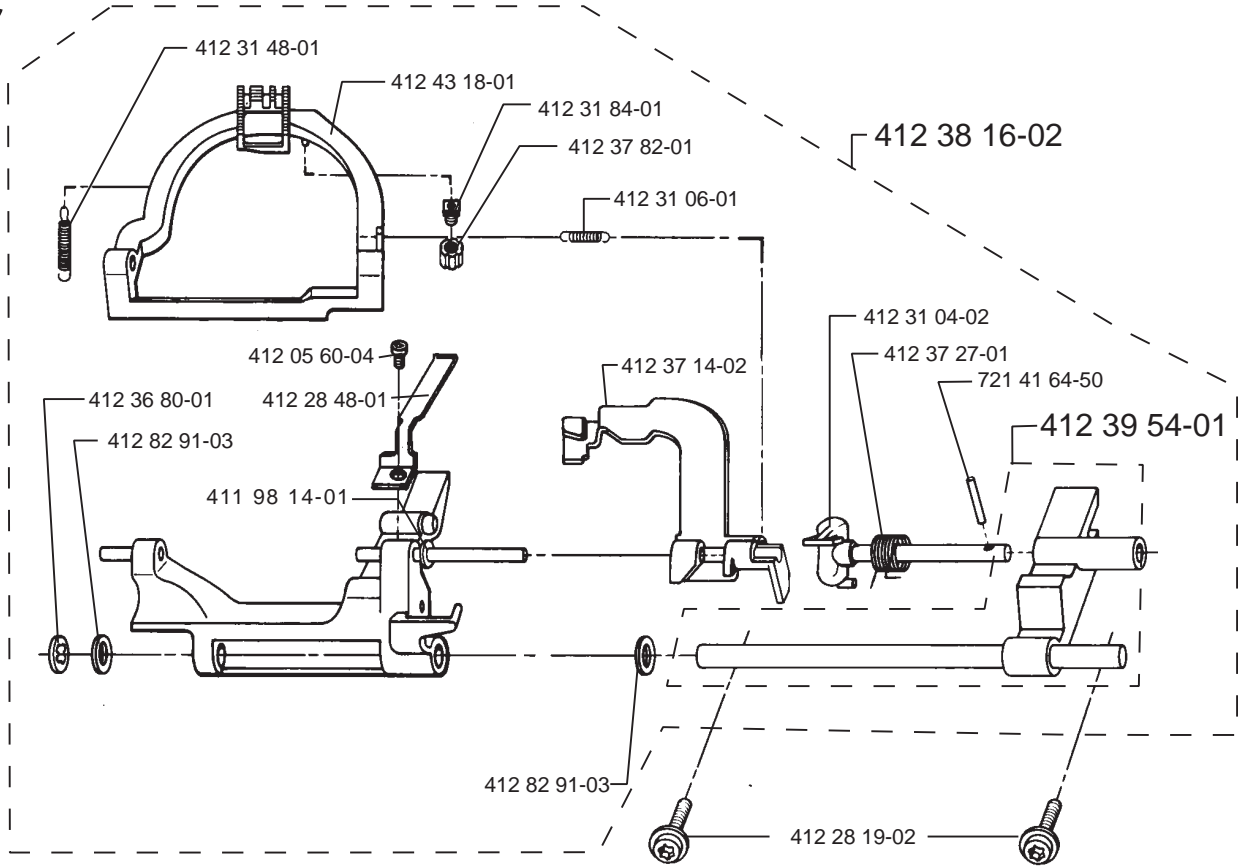
412 32 33-02



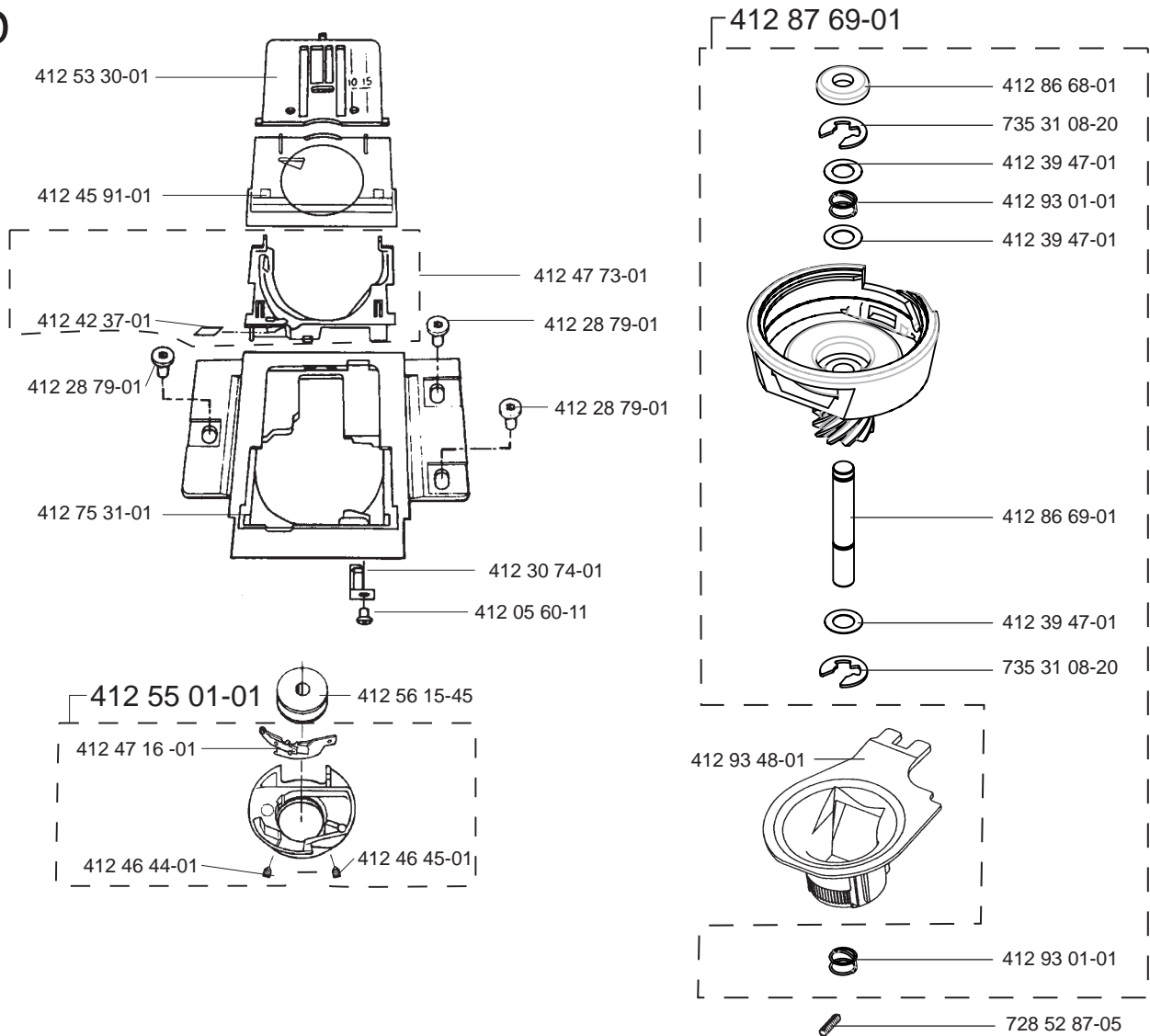
412 32 27-05



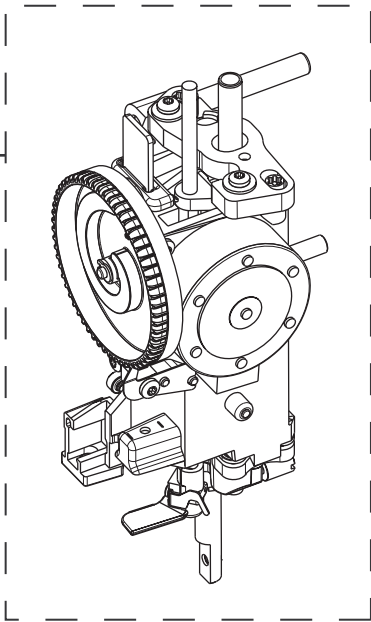
C



D

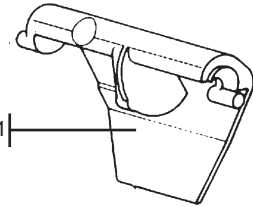


412 76 85-06

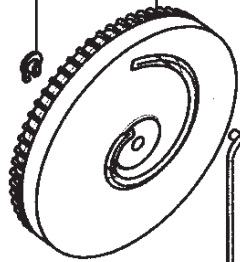


735 61 24-40

412 68 50-01



412 68 52-01



735 58 05-10

411 96 68-21

412 69 65-02

412 68 48-01

412 39 12-01

412 50 48-01

412 50 06-01

412 28 19-02

411 96 68-04

412 69 36-01

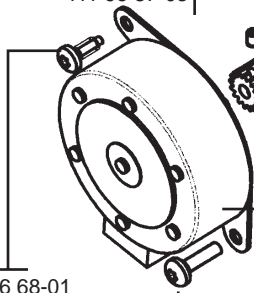
411 96 68-01

412 33 62-01

411 96 87-03

412 50 27-01

735 61 53-40

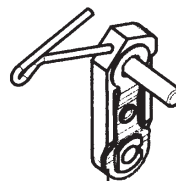


411 96 68-01

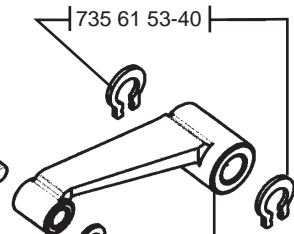
412 32 34-10

412 21 14-04

411 78 10-03



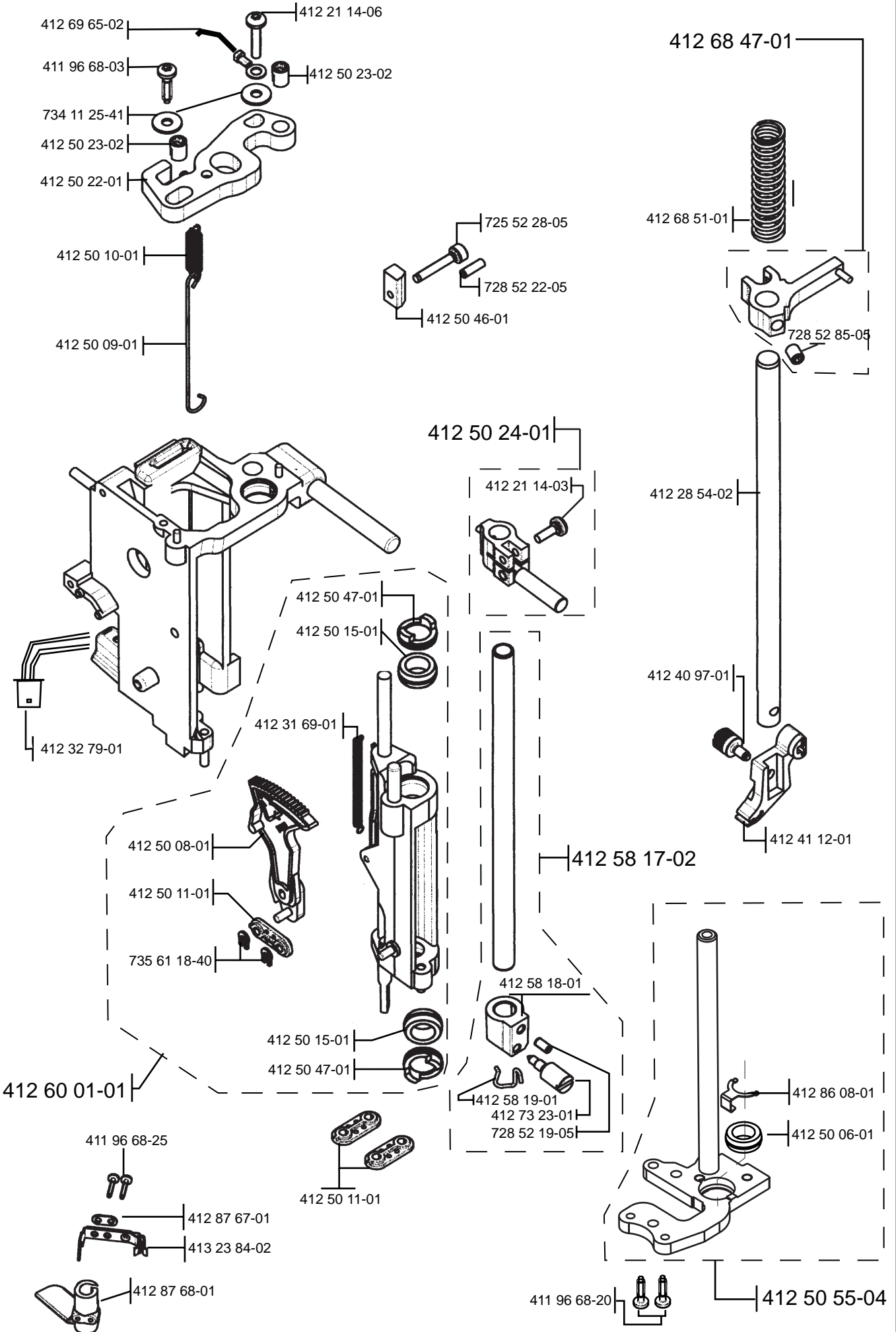
412 60 03-01



412 30 30-01

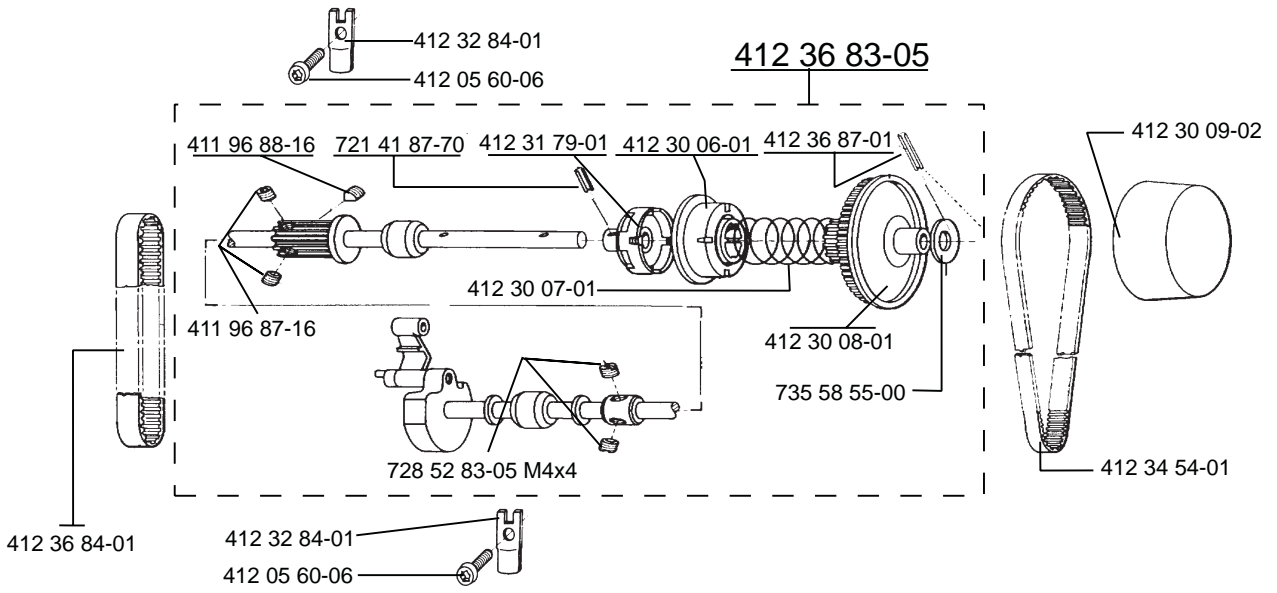
735 61 36-40

F

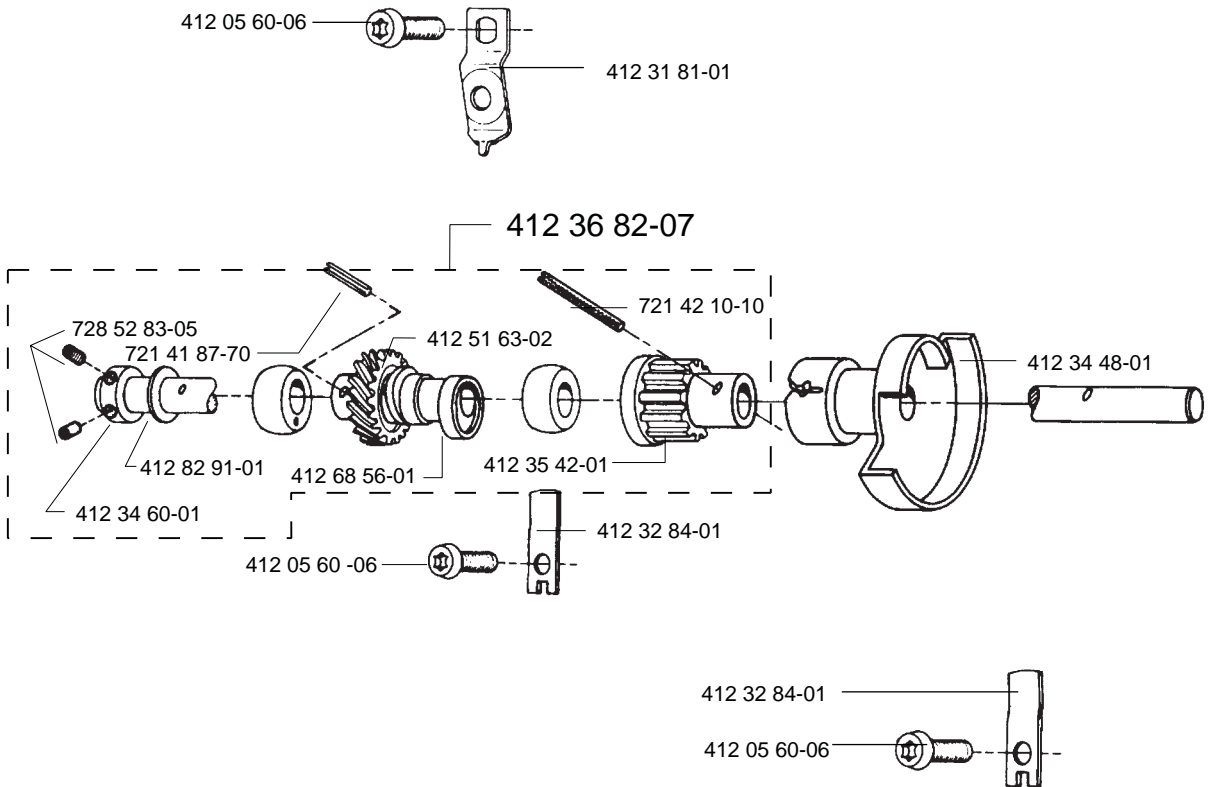




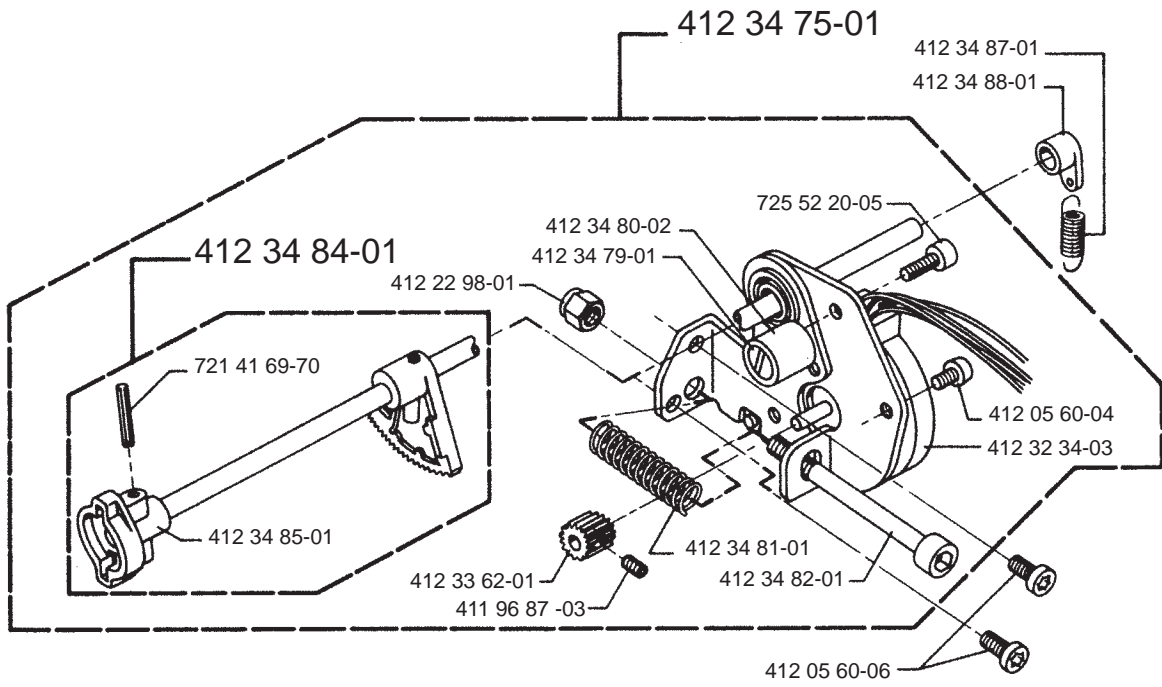
G



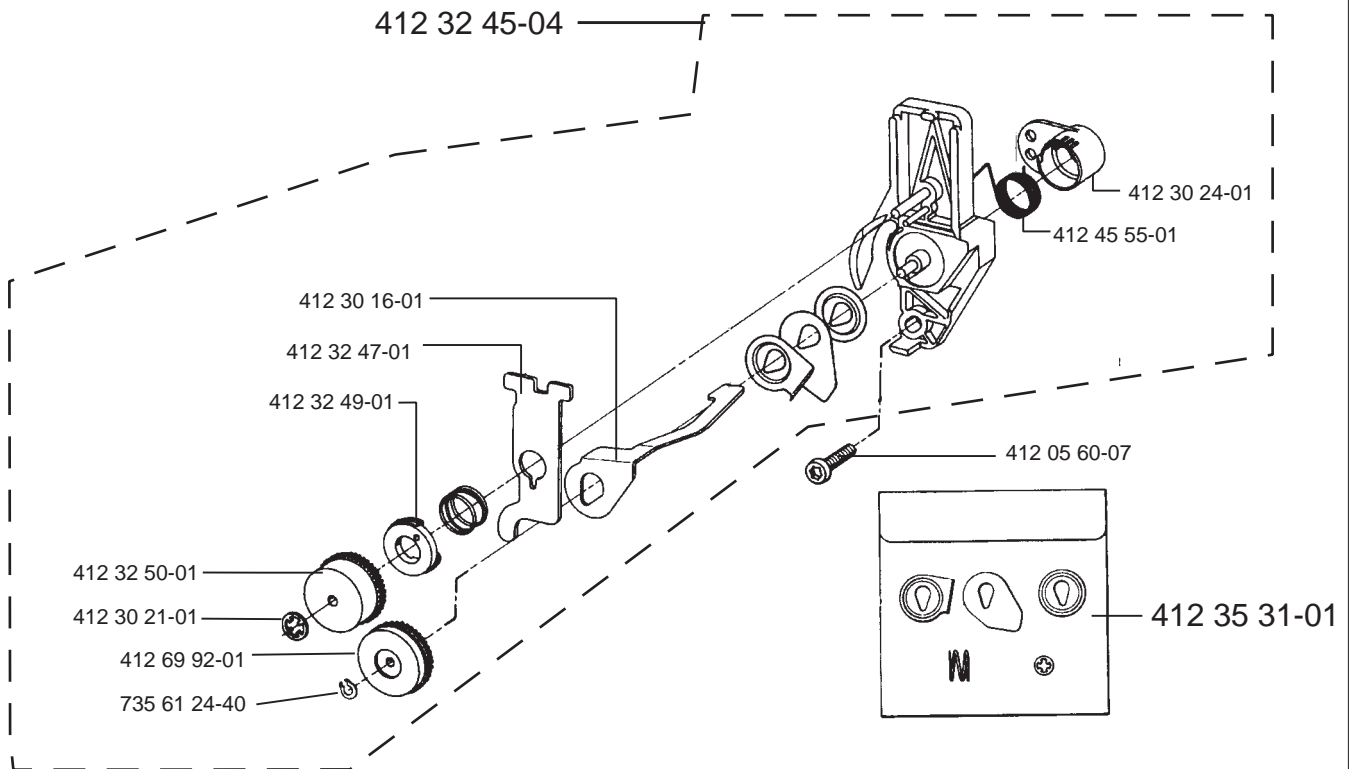
H



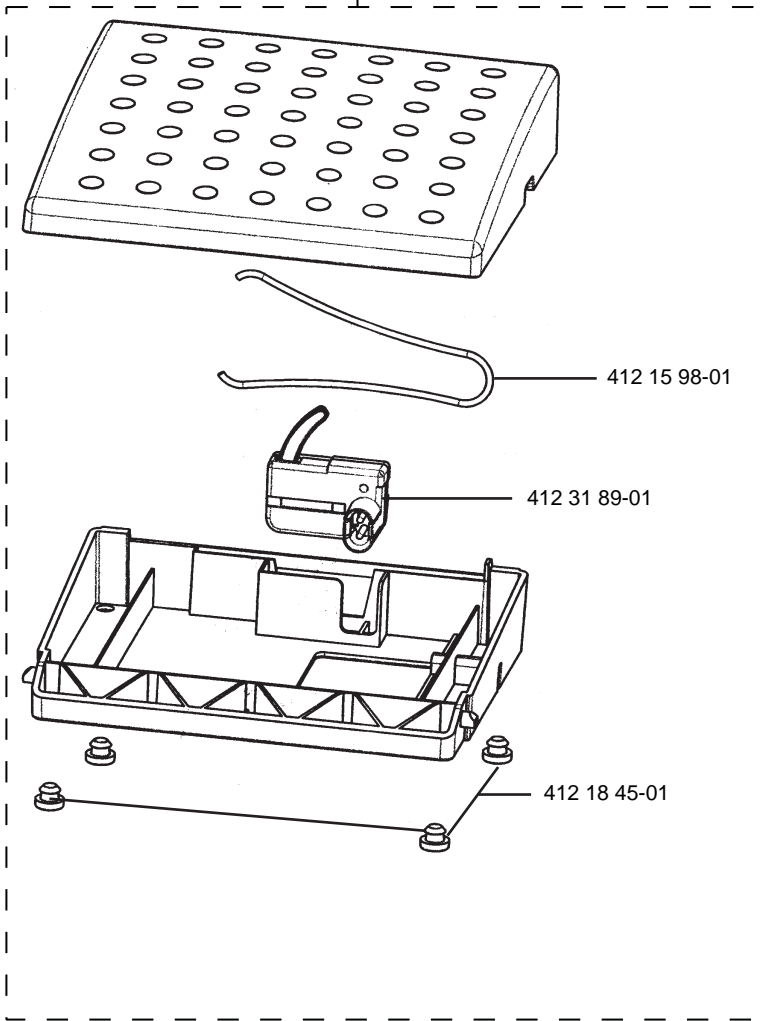
I



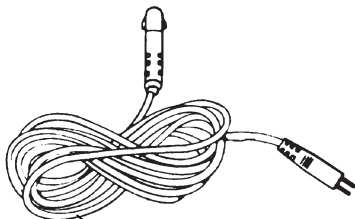
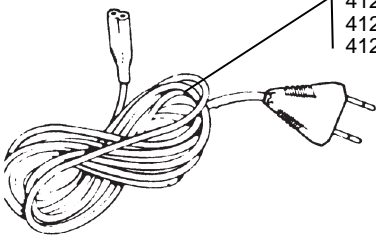
J



412 77 34-01

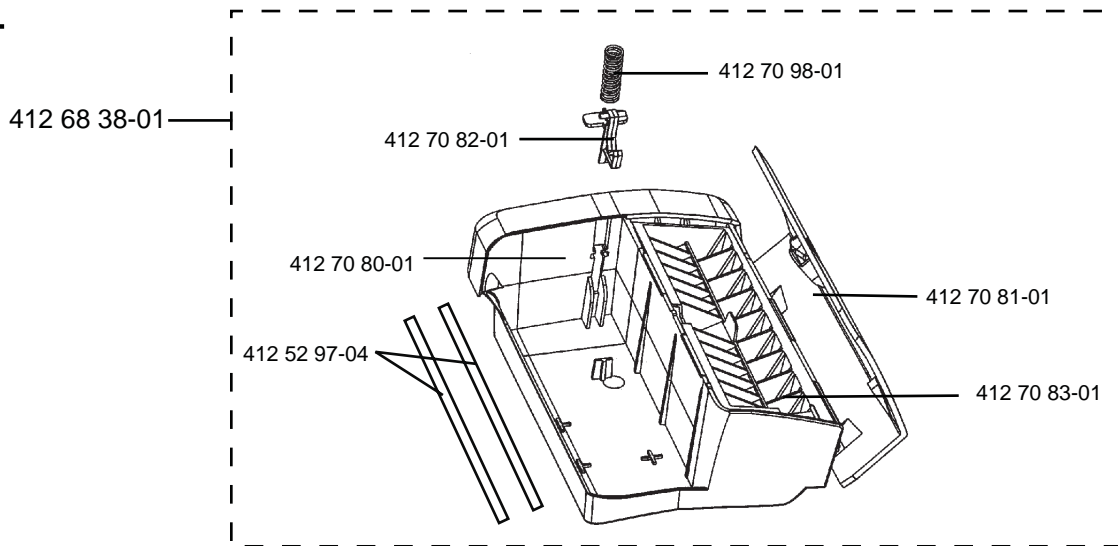


412 15 78-01  
412 15 79-02  
412 15 79-03  
412 15 80-02  
412 15 81-01

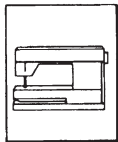


412 31 44-01  
412 31 44-02

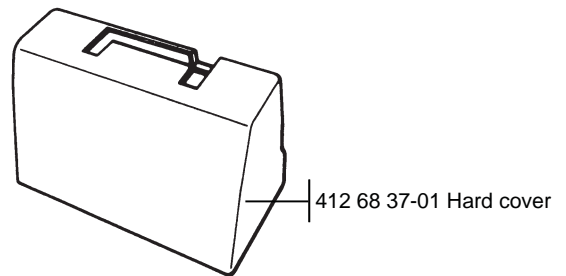
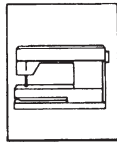
L



Users Guide 715, 735, 755



Owners handbook



- 412 99 26-01 Users Guide Swe
- 412 99 26-06 Users Guide Dan
- 412 99 26-07 Users Guide Isl
- 412 99 26-10 Users Guide Jap
- 412 99 26-11 Users Guide Fin
- 412 99 26-21 Users Guide Nor
- 412 99 26-26 Users Guide Eng
- 412 99 26-31 Users Guide Fra
- 412 99 26-36 Users Guide Holl
- 412 99 26-41 Users Guide Ita
- 412 99 26-46 Users Guide Spa
- 412 99 26-51 Users Guide Germ
- 412 99 26-56 Users Guide Rus
- 412 99 26-58 Users Guide Est
- 412 99 26-82 Users Guide Pol
- 412 99 26-90 Users Guide Cz

- 413 00 61-01 Owners Handbook Swe
- 413 00 61-06 Owners Handbook Dan
- 413 00 61-07 Owners Handbook Isl
- 413 00 61-10 Owners Handbook Jap
- 413 00 61-11 Owners Handbook Fin
- 413 00 61-21 Owners Handbook Nor
- 413 00 61-26 Owners Handbook Eng
- 413 00 61-31 Owners Handbook Fra
- 413 00 61-36 Owners Handbook Holl
- 413 00 61-41 Owners Handbook Ita
- 413 00 61-46 Owners Handbook Spa
- 413 00 61-51 Owners Handbook Germ
- 413 00 61-56 Owners Handbook Rus
- 413 00 61-58 Owners Handbook Est
- 413 00 61-90 Owners Handbook Cz

ACCESSORIES



412 35 31-01

Thread tension set



412 39 09-29 (715,730)  
412 39 09-30 (755)

Plastic bag with access.



412 56 15-45

Plastic bobbins 10 pac